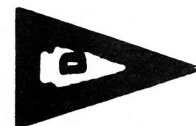




"Fly The Ensign Proudly"



Channel Chatter

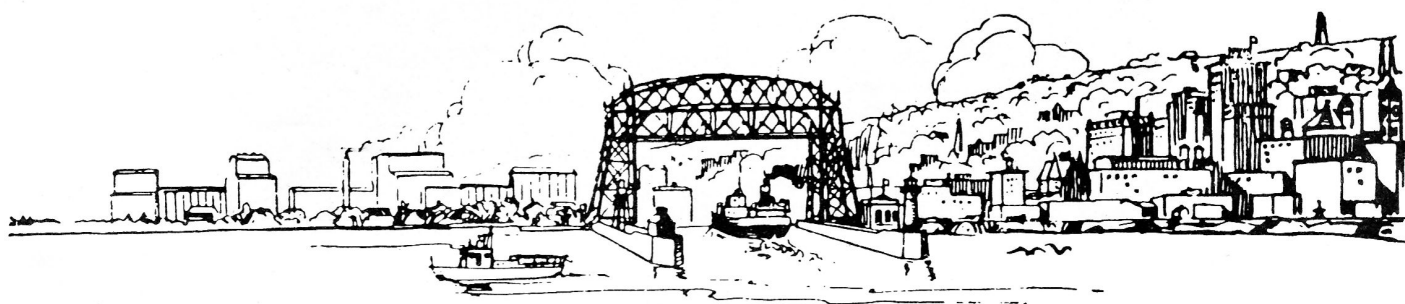
Published by The Duluth Power Squadron

A Unit of the United States Power Squadron
District 10

Vol. 88

Duluth, Minnesota, August- September 1988

No. 4

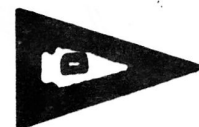


ON THE INSIDE

COMMANDERS MESSAGE
EDUCATIONAL REPORT
ADMINISTRATIVE OFFICERS REPORT
PREDICTED LOG CONTEST
USPS EDUCATIONAL FUND REPORT
JULY 3RD -4TH EVENTS
ADMISSIONS OFFICER REPORT
CORN ROAST 88



DULUTH POWER SQUADRON
MEETINGS & EVENTS FOR 1988-1989



DATES

MEETINGS

MARCH 14, 1988	EXECUTIVE BOARD
APRIL 11	EXECUTIVE BOARD
APRIL 21	GENERAL MEETING
MAY 9	EXECUTIVE BOARD
MAY 19	GENERAL MEETING
JUNE 6	EXECUTIVE BOARD
JULY 11	EXECUTIVE BOARD
AUGUST 8	EXECUTIVE BOARD
SEPTEMBER 12	EXECUTIVE BOARD
OCTOBER 10	EXECUTIVE BOARD
OCTOBER 20	GENERAL MEETING
NOVEMBER 7	EXECUTIVE BOARD
NOVEMBER 17	GENERAL MEETING
JANUARY 9, 1989	EXECUTIVE BOARD
JANUARY 19	GENERAL MEETING
FEBRUARY 16	ANNUAL MEETING & ELECTION

DATES

EVENTS

APRIL 8-10, 1988	DIST. 10 CONFERENCE @ APPLETON
APRIL 30	FITTING OUT PARTY
MAY 14	CANADIAN CHANGE OF WATCH
MAY 21	DOCK CLEAN-UP
JUNE 4	HARBOR CLEAN-UP
JULY 4	FESTIVITIES & BOAT PARADE
AUGUST 20	PREDICTED LOG RACE
SEPTEMBER 3	TREASURE HUNT
SEPTEMBER 4	CORN ROAST
OCTOBER 28 - 30,	DIST. 10 CONFERENCE @ OSHKOSH
DECEMBER 3	CHRISTMAS PARTY
MARCH 4, 1989	CHANGE OF WATCH



COMMANDERS MESSAGE

MAYDAY MAYDAY MAYDAY! IT WORKS.



An Air Rescue From a Remote Location

I had an interesting experience while on one of my trips to Isle Royale this spring which I would like to share with you.

Four of us in the Kay Jay were cruising up the north side of the island on a beautiful bright peaceful morning. We had the entire north side to ourselves, no other boats. We decided to go into the small dock at Todd Harbor for a leisurely lunch. As we came around the small island and into the cove heading toward the dock, a group of backpackers who obviously had been on the trail a few days, were waving their arms and frantically motioning us into shore. We found out after getting to shore that one of the backpackers had collapsed on the trail and was in a shelter about two blocks up the shore. He had the symptoms of a heart attack, gasping for air, pain in the chest, and numbness on one side, etc.

We called the Park Service with no answer. What were we going to do? The patient had been there about an hour and a half already. Should we take him on our boat to Rock Harbor or even Thunder Bay? Or should we go for help?

We decided to first try and raise the Park Service again by going outside the confines of Todd Harbor into Lake Superior where our radio would carry over the hills. We still did not get an answer from the Park Service.

continued on the next page

COMMANDERS MESSAGE CONTINUED

I finally referred to my USPS quick reference radio Emergency Procedures decal and sent out a Mayday message. We immediately recieved a response from the Park Service [Mott Island]. We gave all the particulars of our situation and they assured us they would have a boat there in 35 minutes. With this message we went back into Todd Harbor and the backpacker, who appeared to be in charge, went to the patient to reassure him that help was on its way.

The radio communications procedures and training we had in the USPS Public Boating and Marine Electronics course came in handy. While we remained in Todd Harbor, we did not have direct communications with the Park Service because of the hills and trees. Messages were relayed through Coast Guard Duluth as to the condition of the patient, etc.

In about one and a half hours the Park Service boat did arrive with paramedic help. After more radio communication a Coast Guard helicopter was called in from Traverse City, Michigan with a flight surgeon on board. The patient was picked up by cable into the helicopter and brought to the hospital in Houghton, Michigan.

A report from the hospital a week later confirmed that the victim, a 43 year old policeman from Chicago, had a heart attack and had recovered enough so he could be released from the hospital.

This even could have been a disaster, but turned out to be a successful rescue partly due to our boat having proper radio equipment and having taken advantage of the USPS Classes and its proper operation.

Some other comments:

The system works! A Mayday call receives a prompt response and considering the remote location on Lake Superior, the Coast Guard and the Park Service did an excellant job.

It is recommended that every boater post near their radio, a copy of the quick reference EMERGENCY RADIO PROCEDURES decal - it's difficult to remember them during an emergency. Practice your radio communications - familiarity with the procedure and equipment makes it easier for you and those with whom you are communicating.

Going to other subjects - I would like to give a special thanks to Arne and Gina Wuorinen for the excellant job of planning and running the 4th of July activities - the weatherman even cooperated. A thanks to Leo Kennedy, Bob Kervina, and Erling Hansen for doing the difficult job of up-grading the electrical system on the Squadron Dock. It received a good test during the 4th of July with no problems. Also to P/C Howard Boynton and Bob Haigh who repaired the swing set. A thanks also to Sid Mason, our Dockmaster who has kept the dock looking excellent and to his lawn mowing crew of Dick Vitullo, Tom Pollock, John Novy, and Marty Fossen.

Ken Johnson, N
Commander



EDUCATIONAL OFFICER'S REPORT



All educational classes have concluded for the summer. During the boating season, I encourage all who have taken courses to put to good use your new found knowledge to become safer boaters.

CONGRATULATIONS

CONGRATULATIONS

CONGRATULATIONS

We have 14 new [S] SEAMANSHIP members. They are;

Bruce Beste S
Paulette Holt S
Jon Moin S
David Nyholm S
Stuart Walker S

Christopher Coleman S
Loretta Johnson S
John Navy S
Thomas Sershon S
Gina Wuorinen S

Tom Holt S
Michael McKinney S
Elizabeth Nyholm S
Timothy Sundquist S

We have 14 new SAIL graduates. They are;

Dennis Bradley
Harvey Hengel
Bonnie Matuseski
James E. Munger
Mary Richey

Gloria DeSmedt
Dennis Markon
Heather Meehan
Vernon Peterson
Eugene Rock

Candance Hengel
Mary Markon
James Meehan Jr.
Gilbert Richey

Exam results are also back from the NAVIGATION Class, and we have 4 new NAVIGATORS. They are;

Candance Hengel N Harvey Hengel N Kenneth Johnson N Eugene Rock N

Congratulations to all of these people who have worked hard to attain these grades.

EDUCATIONAL ACHIEVEMENT

With the completion of Sail and NAVIGATION, we have 3 more full certificate holders in our Squadron. This award is given to members who have completed all 5 Advanced Grades and all 5 Elective Courses. Our hats off to these 3 people;

Candance L. Hengel N Harvey A. Hengel N Eugene L. Rock N

Fall Classes tentatively scheduled;

PILOTING..approximately 12 weeks. Anyone interested in teaching this course, please contact SEO Candance Hengel. We do need instructors for several classes. Start date late October.

Advanced Pilot..October 1988 through March 1989. Plan now to attend. You need the grade of P [Piloting] to qualify for the AP course.

Depending on interest shown, INSTRUCTOR QUALIFICATION, MARINE ELECTRONICS and ENGINE MAINTENANCE will be conducted late this fall or winter.

Candance L. Hengel N
Educational Officer



Administrative Officers Report

Duluth Squadron's 4th of July Stars

Gina and Arne Wuorinen chaired the 4th of July festivities for the second year in a row. This year a Strawberry Potluck Social was added with excellent results. Gina, Arne and their two sons Brian and Greg hail from Esko, Mn. Arne is the captain of the spunky 28' cruiser "Get-A-Way". Arne works at the Duluth News Tribune. He is also a member of our Executive Committee. Gina works at Potlach. She sews the squadron's pennants and flags. If you looked closely at the decorations on the "Get-A-Way" you may have noticed they were all of fabric sewn by Gina. The Wuorinens did a fantastic job of organizing the activities and obtaining prizes. The only unsuccessful effort was of finding a Sacred Calabash successor. It was a fulfilled weekend. A super team effort. Thanks Gina and Arne!

The Strawberry Social's winning desert was made by Betty Nyholm of Esko, Mn. Betty and her husband Dave have a spunky 28' cruiser "The Rose", which is a twin to the Wuorinen boat. The Nyholms are new members already in high gear. Betty and her son Chris took the boating course this past winter. We hope they will soon become full members. Betty is a kindergarten teacher in Cloquet. Betty brought her prize winning recipe "Suprise Beauty Desert" home from school. I think she copied it. Our judges however, still gave her an "A". Betty loves to cook, can and bake when she isn't jazzercizing. Hope she can fit time in for the Squadron in her busy schedule. "Suprise Beauty Desert" recipe follows

Layer 1 - Mix and pat into a 9x13 pan, then freeze

- 1 c. graham cracker crumbs
- 1/4 c. melted butter
- 3 T. sugar

Layer 2 - Beat 1st 3 ingredients together separately and the 2nd 3 separately

- 1 8oz cream cheese
- 1/2 c. sugar
- 1/2 t. vanilla
- 1 c. whipping cream
- 2 T. powdered sugar
- 1/2 t. vanilla

[continued]

HOMECARE OXYGEN SERVICE, INC.

HOME & PORTABLE OXYGEN SYSTEMS
RESPIRATORY THERAPY EQUIPMENT

24 Hour Service
Medicare - Medicaide
Insurance Claims Processed For You

724-6079

Locally Owned
839 Claymore Street - Duluth

SHOP AT . . .

6th Ave.



220 N. 6th Ave. East
Duluth, Minnesota

Open 7:00 AM - Midnight
Monday thru Saturday
Open 8:00 AM - 9:00 PM on Sunday

Northwest
OFFICE SUPPLY

**GUARANTEED
QUALITY SERVICE.**

202 EAST SUPERIOR STREET
DULUTH, MINNESOTA 55802
218/727-7295

ARROWHEAD
EQUIPMENT COMPANY

GOODYEAR

Brake Service

TRUCK CENTER DRIVE • DULUTH, MN 55806 • 218 - 628-2345

Goodyear tire for more
good years in your car,
truck or camper.

Front End
Alignment & Repair



MORE SQUADRON 4TH OF JULY STARS

Combine the two mixtures and fold in 1 cup marshmallows [miniture]. Spread over crust.

Layer 3 - Drain juice from 10 oz pkg. of strawberries. Add enough water to make 2 cups, mix with 1pkg of Danish Junket and cook 1 minute, stir in berries, cool 10 minutes, spread on cream cheese layer. Refrigerate or freeze. May be topped with whip cream.

Eight year old Jessica Johnsen won the prize for the largest fish caught during the July 3rd fishing contest. Jessica is the daughter of Rita and Steve Johnsen. She caught a 5#2oz Atlantic Salmon on a silver Finn spoon with green prizm tape on a slider about 75' out from the pumping station. She said Dad helped take the fish off the line. Jessica when not fishing with the family in their 28' cruiser "Contagious" goes off by herself on the Lester River. So far this year she has caught 11 rainbows in the Lester. Jessica has been fishing for about 2 years. One trip with Dad this year yielded several good sized fish. Watch out guys. There is female competition out on the lakes and rivers and she's still only 8 years old.

The Harcon recieved first prize in the boat decorating contest. Most members will recognize the Harcan owners as P/C Harvey and SEO Candance Hengel. Harvey is owner-director of Gold Cross Ambulance Service and Candy is a nurse. This past winter the Hengels went from a 36' to a 38' Carver. First Mate Candy likens the decorating of the new boat to getting a bride ready for a wedding [something old, something new, something borrowed and something blue]. John DeSmedt portrayed Uncle Sam on the pulpit. Was he the something old, new, borrowed or blue? March music piped through the hailor and two flag twilers on the bow topped off the winning boat. The Harcan later led the boat parade as part of the City of Duluth's July 4th festivities.

LT/C JOHN DESMEDT, AP

**FITTING OUT TIME IS THE TIME TO
INSPECT YOUR FIRE EXTINGUISHERS**

F & I SALES, INC.
FIRE & INDUSTRIAL

HOWARD L. BOYNTON
[218] 727-0101 BUS.
[218] 727-2074 HOME

1902 W. 1ST STREET
P.O. BOX 6712
DULUTH, MN. 55806

TWIN PORTS
CONVALESCENT

727-3036

24-Hour Service • Low rates
**Convalescent Wheelchair and
Stretcher Transportation
to and from**
Doctor's office • Social events
Private home visits
Nursing Homes and Hospitals

**Home Oxygen
Sales & Rentals**

211 East Second Street
Duluth, Minnesota

**TODD
SIGNS**
DESIGNERS CREATORS

324 Miller Trunk Hwy. Duluth, MN 55811

729-6800

*Buy from whom the architects consult... We are the area's most experienced
signage experts with the zenith of quality by which others are judged.*

INTERIOR-EXTERIOR SIGN SYSTEMS / LETTERS
ELECTRICAL / NEON / DISPLAYS / SCREEN PRINTING
LETTERING BY COMPUTER & BY HAND / FLAG POLES

SALES - INSTALLATION - MAINTENANCE

ERLING R. HANSEN

*Your Locally Owned Contractor
for...*

Commercial — New Construction
— Industrial —
General Remodeling and Repairs

722-0589

PREDICTED LOG CONTEST

Saturday, August 20th, 1988

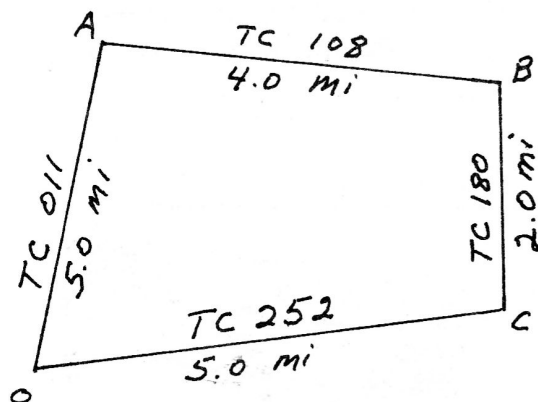
0900 SKIPPERS AND OBSERVERS MEET AT THE SQUADRON DOCK FOR BRIEFING AND INSTRUCTION

1000 CONTEST WILL GET UNDERWAY, WILL DEPART SQUADRON DOCK, RUN OUT SUPERIOR ENTRY

PREDICTED LOGGING IS:

1. Cruising with a purpose
2. A contest, NOT A RACE, there is no emphasis on speed
3. Predicting in advance, the time required to run each leg of a course
4. A test of the Skippers' skills in Piloting, Navigation, and boat dependability
5. Challenging, Interesting, and FUN

Here's an example;



Predict time to run from;

O to A _____

A to B _____

B to C _____

C to O _____

Total _____

RULES

RULES

RULES

1. Only a compass and tachometer may be used to run this contest. Use of any other electronic device will disqualify any contestant.
2. Each boat will have a neutral observer.
3. All time pieces will be turned over to observer.
4. Observer will inform Skipper of course change.
5. Percentage error will indicate the winner.
6. Contestants must figure their own times

Contestants should have a PLOTTER, DIVIDERS and HARBOR CHART.

Prizes will be awarded at the Annual Corn Roast Sept 4th 1988

Every boat will receive a brass dash plaque for entering

Alternate date in case of inclement weather will be Sept. 5th 1988



USPS

EDUCATIONAL FUND

Duluth Squadron has now donated to the USPS Educational Fund for the 4th time. Our funds are raised through the 50/50 drawings held only at our general meetings.

As of 31 May 88 the National fund has approximately \$570,000. Only the earnings from this fund are used for grants, but over the 25 years of the funds' history approximately \$300,000 in grants have been made.

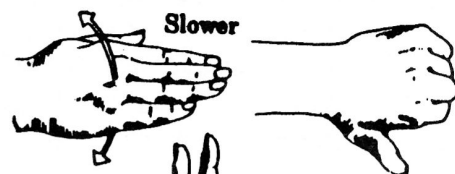
Some of the latest grants are:

Overhead projection masters for N, JN, Weather, Seamanship, Speaking and Teaching	\$16,000
Development of New Cruising Course	3,000
Printing Cruising Course	13,000
Redevelopment & Printing Boating Course	37,500
VHF Decals	8,600
SEO Kits	15,000
Knots Supplemental Course	2,000

USPS BOAT INSURANCE. If you have not looked into it I suggest that you do so. With increased coverage, lower deductible, uninsured boaters, towing, dinghy and motor coverage. I saved 37% on my insurance premium. Having talked to Harvey Hengel and Sid Mason, they said that their savings were between 25 to 35%. If you would like more information contact Sid Mason or write to USPS Headquarters. YOU WON'T BE SORRY!

P/C DAVE CARLSON, N

HAND SIGNALS FOR SKIERS



Speed
OK



Stop



Faster



Turn Right



Turn Left



OK



Back to Dock



Fallen Skier
Watch Out



1901 MINNESOTA AVENUE
PARK POINT, MN 55802
727-7635

8AM TO 8PM
8 DAYS A WEEK

value

(val'u) n. electricity
from Minnesota Power



minnesota power

FISHING CONTEST 3 JULY 1988

First place was won by Jessica Johnsen, daughter of Steve and Rita Johnsen. Jessica won a set of fish flags and a \$10.00 gift certificate from Marine General Sup. Larry Anderson won a fish mug for the ugliest fish. A total of 12 fish were entered in this years contest.

STRAWBERRY SOCIAL AND CONTEST

This year was the first for this event and with 65 people attending it looks like it could be a keeper. Over 20 different strawberry dishes were entered, with first place going to Betty Nyholm, with her "Surprise Beauty Desert", 2nd place went to Jan Fitch, for her "Fluffy Strawberry Desert", 3rd place went to Chris DeSmedt, for her "Strawberry Dacquiris".

4TH OF JULY BOAT DECORATING AND PARADE

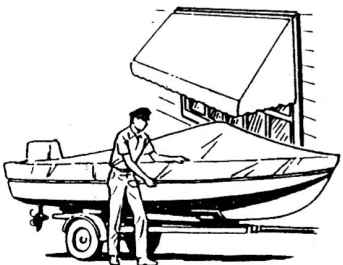
The boat decorating contest was won by P/C Harvey Hengel and SEO Candance Hengel owners of the Harcan. Second place went to the Dolphin, Captained by Harlan Eggert and his First Mate Mavis. Third place went to the Gloria Jean III, Captained by Dick Vitullo and his First Mate Gloria. Twenty boats took part in the contest and later took part in the parade that had About 28 boats in this years event. I don't think anyone that stayed out for the fire works will ever forget them.

Arne and Gina Wuorinen
Chairpersons

TREASURE HUNT SEPT 3rd 1988
WATCH for a FLIER

CANVAS PRODUCTS

Sales & Repair



- Truck tarps,
- Grain & Flat Beds
- Awnings,
- Canvas-Vinyl
- Pack Sacks
- Ice Fishing Tents
- Boat Covers
- Contractors Supplies
- Party Tent Rentals
- Zipper Repair
- Truck Seats

PROCTOR CANVAS

208 3rd Ave., Hwy. 2 Proctor 628-2316

Patty Cake Shop

Captain Jack Scetebier invites you to stop in and try some of his world famous Goodies, Pastries, Cakes, Doughnuts. Breads and many more delicious items.

All baked by Duluth's Master Baker

1434 East Superior St. - Duluth

728-4219



GENE RICE YACHT INSURANCE

2141 ALTOONA AVE.
P.O. BOX 1246
EAU CLAIRE, WISCONSIN 54702

Insuring Yachts 26' & larger since 1966

•Sailboats •Powerboats •Houseboats

Call Pat Brandner Collect For a Quote
715-834-8440



Receive 5 issues
for the price of 4
Annual Rate
\$10.00

New from the publishers of Lake Superior Magazine

A special interest quarterly about the obscure stories of Lake Superior. Publisher James R. Marshall's insight to the shipwrecks and unexplained mysteries of the lake.

BECOME A CHARTER SUBSCRIBER!

Make checks payable to

LAKE SUPERIOR

MAGAZINE™

325 Lake Avenue South • Duluth, Minnesota 55802
218-722-5002



Largest stock of Marine Supplies in this area

also fishing tackle,
rods, reels,
and electronics

1501 London Road • Duluth
724-0355

ADMISSIONS OFFICER REPORT

In 1988 we have had 15 active and 6 family members join the Duluth Power Squadron. There has been two reinstatements.

Notice to All Squadron Members of Individuals Proposed for Membership. The following individual has been proposed for membership in the Duluth Power Squadron. If you have any comments, favorable or unfavorable, about the individual listed below, please communicate in writing before August 10, 1988 with Larry Anderson, Admissions Officer at: 4380 Solway Rd. Hermantown, MN 55810

Arthur Mahlberg

ADDITIONS TO ROSTER

Bruce Beste
6502 Nashua St.
Duluth, MN 55807
624-5696

Tom Daugherty Sr. (Jean)
3702 Miller Trunk Hwy.
Hermantown, MN 55811
729-7379

Joseph Economy
524 N. Oak Bend Dr. Apt. 212
Duluth, MN 55811
727-7927

Robert Geisert
326 W. Toledo St.
Duluth, MN 55806
724-8161

Fred Sherman
53 Polo Drive
Colorado Springs, CO 80906
1-719-633-5255

John Syck (Gloria)
4026 Washburn Rd.
Duluth, MN 55803
525-2176

Larry Anderson
Admissions Officer

ROBERT BYRNE

1-715-394-3935
1-715-374-2354

MARINE SURVEYOR

1724 Lackawanna Ave.
Superior, WI 54880

Certified
Chapman School of Seamanship
Yacht & Small Craft Surveying

Fast, Quality Service

Speciality Welding PROP SHOP



SKEG REPAIR

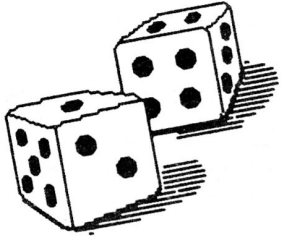
BOAT PROPELLER REPAIR & SALES
ALUMINUM, BRASS, STAINLESS

ERIC (RICK) HOGLUND
(218) 729-8304

3633 MILLER TRUNK HWY.
DULUTH, MINNESOTA 55811



CORN ROAST 1988



Place; Squadron Dock
Date; Sept, 4th 1988
Time; 1200 [noon]
Cost; Adults \$7.75
Children \$3.75

Roast Beef and Corn Dinner
Hors d'oeuvres
Refreshments
Games for children and adults
Volleyball, jarts, horseshoes and bocceball
Bonfire
Games of Chance - Crab Races - Sponge Toss
Dancing
Guests More Than Welcome
Lots of Fun and Prizes
Casino and Auction



Keep the weekend open, bring your friends and plan on a good time

Squadron Dock Tips and Reminders

Please no WAKE!!!!!!!!!!!!!! When entering and leaving dock area stay close to dock. The water level rises sharply toward the opposite shore. The dock has electricity, but not in excess. Each pole that has electricity has a duplex outlet capable of supplying 15 amps or 1800 watts per duplex. That means if another unit plugged in you must share that 15 amps. Most appliances which produce heat are the highest wattage users, [water heaters, toasters, curling irons, hair driers, space heaters, coffee makers, fry pans, irons as well as larger refrigerator-freezer combinations]. Amps [15] X Voltage [120] = 1800 watts. The corn roast is the most important time for energy conservation. Specific appliance information will be handed out during the corn roast.

Rafting to other boats can be tricky. It can also be fun or a nightmare. **Please observe the following:** Make arrangements ahead of time with friends of like lifestyles to be together. In any case the dockmaster will be available to locate a place for incoming boats and help tie up.

Please exercise all common courtesy. Keep traffic to an absolute minimum, WIPE your feet, observe the quiet hours of adjoining boats, carry all small children and animals across boats.

SAIL

60'	1963	Kreuzeryacht - gaff rigged schooner, historic & classic beauty	\$159,500
40'	1985	Bayfield Cutter - step up to this kind of quality, terrific shape!	119,000
32'	1983	Pearson 323 - clean sailing ambrosia, impressive to behold	66,500
29'	1978	Bristol - the Mercedes of sail, babied by local Dr., indeed Bristol!	43,900
28'	1975	C & C - inboard, refinished inc. Awl-grip, very nice overall	26,900
25'	1978	Mac Gregor - colorful sails, trl., improved & well cared for	9,800
25'	1969	Coronado - sharp int., lots of boat for the \$\$, Lk. Superior clean	8,900
23'	1978	Mac Gregor - nice bimini top, trl., pop-up cuddy, neat as a pin	6,750
21'	1983	Freedom - she's sailed lightly, trl., nice sails, a great first boat!	8,475

CRUISERS

20'	1975	Slickcraft - complete for big lake fishing, new int., trl.	\$9,750
24'	1967	Thompson - open w/cuddy, new power, canvas, trl., MINT!	9,900
25'	1986	Sea Ray Sundancer - just 150 hrs! owner transferred	28,900
26'	1985	Sea Ray Sundancer - this should be at the dealership - just 20 hrs!	24,000
26'	1973	Cruisers - Hardtop, twins, nice trl., great fish or cruise boat	14,900
26'	1982	Cruisers - V-Sport, all options, trl., none nicer on the big lake!	39,700
27'	1972	Condord - Hardtop, rebuilt power, new canvas, nice starter boat	16,900
28'	1980	Wellcraft - Sun Cruiser, cared for & sharp, owner moving	33,900
28'	1966	Pearson Fiberglass - Cabin Cruiser - fantastic condition	23,500
30'	1983	Century Cortez - Grande, rmy., sporty, most options-even a blender!	36,750
30'	1974	Sea Ray - hardtop, needs new pwr., has trl., a \$27,000 boat for	12,900

MOTORYACHTS

53'	1972	Hatteras - an experienced & exciting vessel of envy	\$243,000
51'	1984	Bluewater - 3 staterooms & well-appointed w/all options	172,500
47'	1974	Bluewater - well cared for, but illness forces sale	offer 33,800
49'	1972	Alaskan MY - redecorated & a real head turner!	119,000
45'	1979	Bluewater - Tri-cabin, loaded, mistaken for a cabin - 170 hrs!	139,900
43'	1977	Hatteras MY - a stunning yacht, the quality investment	179,000
42'	1987	Carver Cockpit MY - spt. fish or cruise, never slept on, crisis, steal it	187,000
40'	1962	TUGBOAT - light duty harbor tug, nice shape - what possibilities!	28,600
40'	1978	Bluewater - Tri-Cabin, air, gen., only about 100 hrs., grab this one	59,900
40'	1983	Ocean Alexander Trawler - alt cab., loaded, comfort & resale value	145,000
39'	1979	Skyline Trawler - Turbo diesel w/bow thrusters, nicely apptd.	79,900
37'	1963	Chris Const. Exp. cond. belies age, wor w/out eng. work	Reduced 14,300
35'	1973	Bertram Conv. - quality entertaining & fishing, a yachting statement	72,000
36'	1964	Chris Roamer - Flybridge, bimini, radar, gen., steel hull, beauty!	34,900
38'	1964	Chris Roamer - Alt Cabin, side doors, only 700 hrs! A rare find	54,900
33'	1975	Chris Corinth - here's that elusive creampuff! a classic cruiser	49,500
32'	1974	Trojan F-32 Convert. - very well-kept, electronics, turn key fish/cruise	39,900



82' 1984 Palmer Johnson "The Tina E.":
She is the inaugural commission of the celebrated Tom Fexas "Eagle" collection of fine motoryachts. Experience yachting design, beauty and art in motion. *This is the world class vessel to which many aspire!* **\$1,900,000**

• Marina/Floating Showroom • Financing and Insurance • Documentation and Surveys •

Our customers tell us they're pleased with the cleaner, better maintained boats from the Great Lakes region ... and we're pleased to provide them. Contact us with what you're looking for!

Sincerely,
ED MONTGOMERY
Managing Broker



OWENS YACHT SALES & BROKERAGE
1919 Minnesota Ave.,
Duluth, MN 55802
Office (218) 722-9212 • FAX 722-4730



Barker's Island Marina

The most complete Marine Service Facility on Lake Superior.

FACTORY AUTHORIZED PARTS & SERVICE

MERCUISER ONAN
YANMAR VOLVO PENTA

MARINE SERVICES:

- 30 Ton Travelift
- Awlgrip Refinishing
- Expert Fiberglass Repair
- Seasonal & Transient Dockage
- Electrical and Mechanical Repair

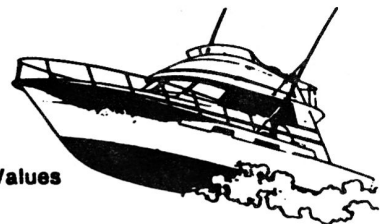
Mechanics on Duty 7 Days A Week

Hwy 2 & 53 Barkers Island - Superior
392-7131
800-826-7010 In WI 800-472-7133

Ask us about

MARINE FINANCING

- New Boats
- Used Boats
- Trailers
- Refinancing
- Accessories
- Current Boat Values



We're the marine financing specialists ready to answer any questions you may have. We offer fixed rate and variable rate loans with amortization periods up to 15 years.

Call or stop by and we'll discuss our current rates, and advise you on the financing that best fits your needs. For all your Great Lakes' sport-fishing and pleasure boating, we're the leaders in marine financing.

Commercial State Bank
OF TWO HARBORS

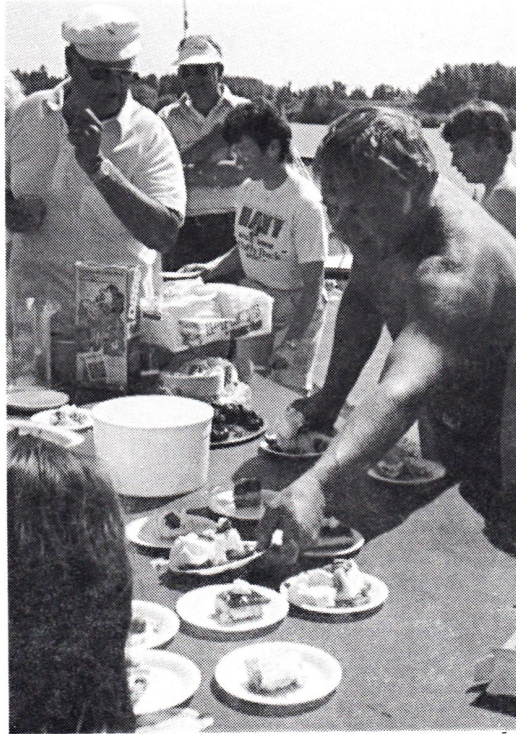
613 1st Avenue • Two Harbors, Minnesota 55616 • 834-2111

Your marine financing specialists

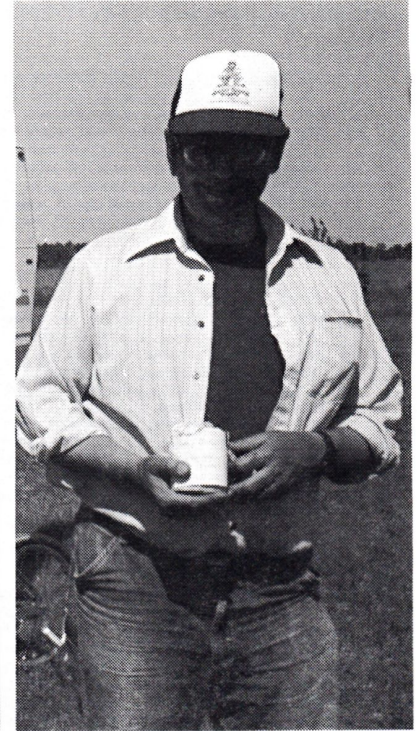
Member FDIC



**FISHING CONTEST
JESSICA JOHNSEN
LARGEST FISH**



**CAN'T YOU JUST HEAR BRUCE SAYING
"HEY MARY GET ME THE BIGGEST ONE"**



**FISHING CONTEST
LARRY ANDERSON
UGLIEST FISH**

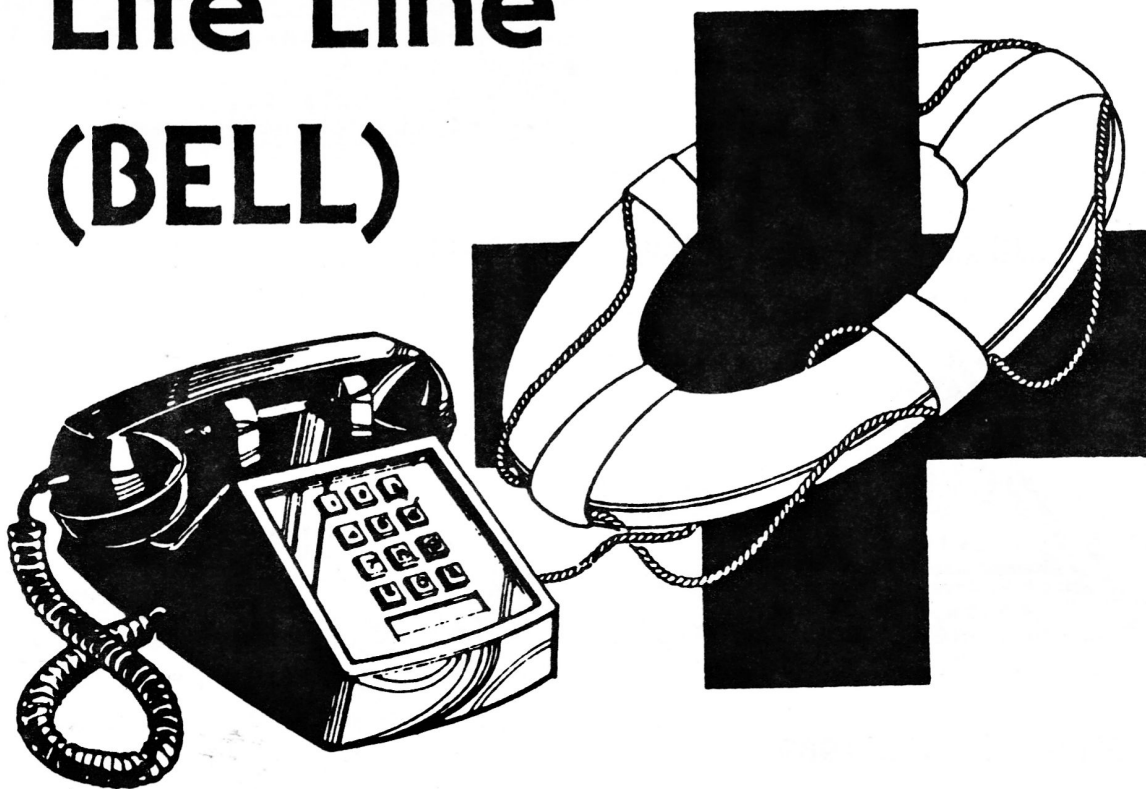


**STRAWBERRY SOCIAL
ARNE WUORINEN, CHAIRMAN WITH PRIZE
WINNERS
JAN FITCH, BETTY NYHOLM, CHRIS DESMEDT**



**4TH OF JULY DECORATING CONTEST
HARCAN FIRST PLACE WINNER**

Boaters' Emergency Life Line (BELL)



The Boaters' Emergency Life Line provides 24 hour a day information to help you with offshore medical emergencies. BELL can provide you with:

- medical guidance from a nurse or physician.
- assistance in obtaining an ambulance at your destination.
- help in contacting the Coast Guard for emergency medical assistance.

To contact BELL have the Marine Operator place a call to (218) 726-HELP.



Emergency Care & Trauma Center

DULUTH POWER SQUADRON
4805 Tioga Street
Duluth, Mn 55804



OFFICERS 1988-1989

COMMANDER	KENNETH A. JOHNSON, N
EX. OFFICER	HARLAN A. EGGERT, AP
SEO	GANDANCE L. HENGEL, <u>N</u>
ASST. E/O	DANIEL J. SIMONSON, <u>N</u>
ADMIN. OFFICER	JOHN R. DE SMEDT, AP
SECRETARY	DAVID F. POULIN, AP
TREASURER	GLORIA J. VITULLO, P
EX. COMMITTEE	WAYNE D. CARLSON, P
	RICHARD J. VITULLO, P
	ARNE D. WUORINEN, P
ADMISSIONS	LARRY J. ANDERSON
DOCKMASTER	SIDNEY R. MASON, P
EDITOR	P/C DAVID C. CARLSON, <u>N</u>

EDITORS NOTES

A lot of you may be on vacation when this hits your mail boxes. I trust that you had a good time and that all went well. If you had any unusual experiences on your trips and would like to share them with us please write up your story and send them to me and I will try to print them in the next issue.

12 September is the deadline for the October - November issue. Please have your articles to me by then or sooner.

If your address has changed please let us know, so we can change our records.

P/C Dave Carlson, N
Editor