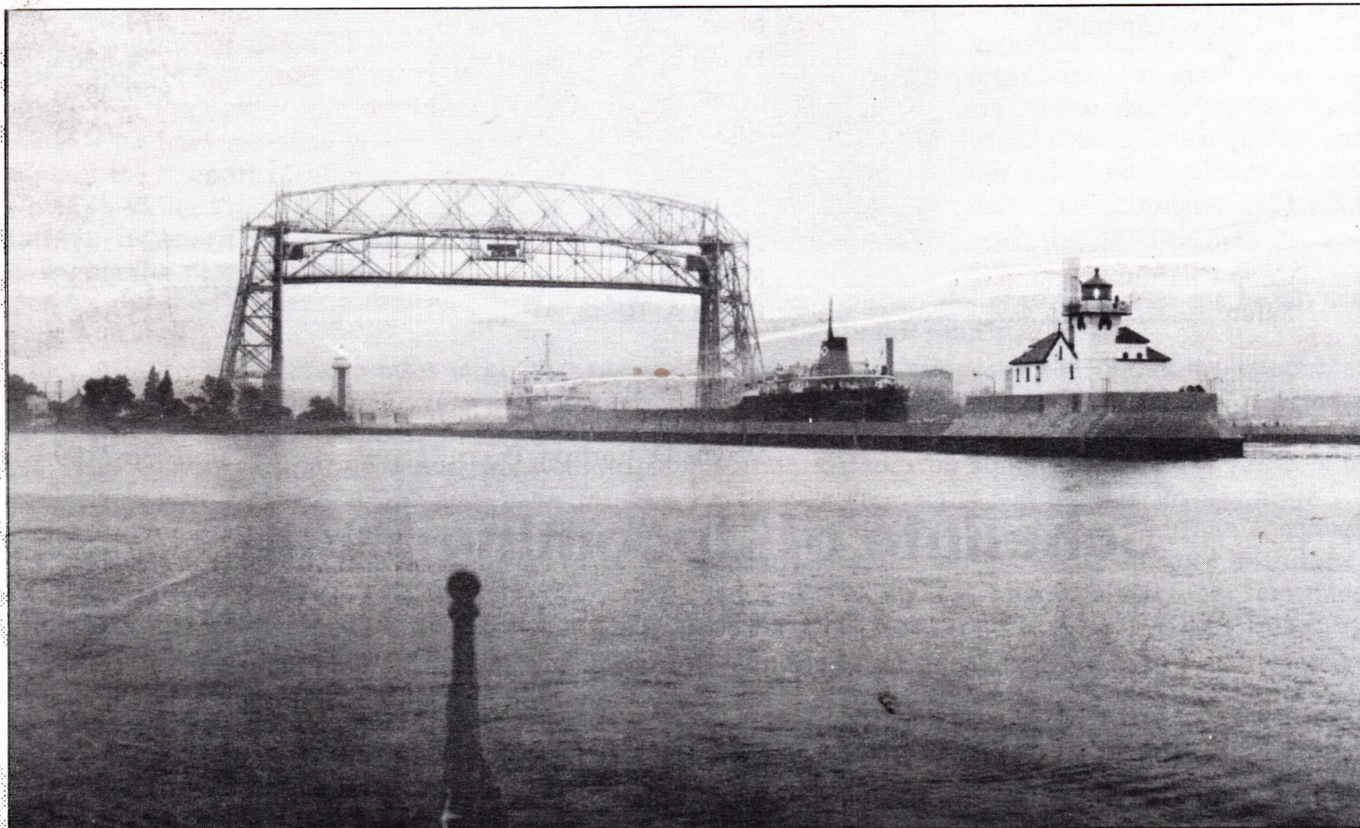


# CHANNEL CHATTER

OFFICIAL PUBLICATION OF THE DULUTH POWER SQUADRON  
DULUTH, MINNESOTA - DISTRICT 10

A UNIT OF THE UNITED STATES POWER SQUADRONS  
SAIL AND POWER BOATING



## INSIDE ...

- Officers' Reports
- Christmas Party
- New Members
- Winter Storage Tips
- Featured Contributor:

Fire & Industrial Sales Co.

... and more!

1994  
VOL. 94  
NUMBER 6  
DECEMBER - JANUARY



# Officers 1994-1995

Commander .....	Mary A. Brisky, AP .....	724-4916
Executive Officer .....	Jay R. Halling, P. ....	722-8172
SEO .....	Adrian G. Rick, AP .....	624-3772
Assistant E/O .....	Sean R. Beaudin, AP .....	626-2047
Administrative Officer .....	Gerald A. Carlson, AP .....	729-8427
Secretary .....	Mary A. Morrow .....	394-5647
Treasurer .....	Rhonda I. Olson, P .....	879-4930
Executive Committee .....	Robert J. Hecht, Sr., P .....	879-9106
	David A. Mattson, AP .....	724-6163
	Gordy M. Olson, P .....	879-4930
	Rickard Stanius, S .....	525-6535
Membership .....	Steve Farrell, S .....	729-8871
Dockmaster .....	Joel F. Berg, AP .....	624-1478
Coop-Charting .....	Robert J. Byrne, N .....	394-3935
Safety .....	Bruce A. Beste, AP .....	525-1969
Editor .....	Peggy A. Berg, P .....	624-1478
Photographer .....	David C. Carlson, N .....	525-1438
Advertising .....	Wayne D. Carlson, P .....	636-2109

## Schedule of Upcoming Events

### DECEMBER

- 1.....Executive Board Meeting, Incline Station Meeting Room
- 10.....Christmas Party, Greysolon Plaza, Moorish Room

### JANUARY

- 5.....Executive Board Meeting, Incline Station Meeting Room
- 19.....General Meeting
- 27-28 .....D/10 Winter Council Meeting, Stevens Point

### On the Cover

The Montrealais is a bulk freighter built in 1962 jointly by Canadian Vickers, LTD., at Montreal, Quebec, and by George T. Davie & Sons LTD. of Lauzon, Quebec. The vessel measures 730' in length, 75' in width, and 39' in depth. At maximum draft of 27'8", she can carry a cargo of 27,800 tons. However, when operating within the St. Lawrence Seaway Lock System it is limited to a draft of 26', and carries a maximum cargo of 25,600 tons.

On the deck are a total of 20 hatches which open into 5 separate cargo holds. Each hatch opening measures 53' x 17'. She is powered by a steam turbine capable of generating 9,000 horsepower. She is also equipped with a bow thruster to maneuver in the narrow quarters of locks, rivers and while docking.

The Montrealais is now owned by the ULS Corporation of Toronto. Original name was the Montrealer but was changed the same year that she was built.

.....Picture and article by P/C Dave Carlson **N**



# Commander's Report

What makes a squadron successful? There are definitely many answers that come to mind. Organization and planning are certainly two on the list. The major reason why the Duluth Squadron has successfully attained goals and grown in membership is due to teamwork.

Teamwork means members working together. It allows a collective group of individuals to do things that they could not do alone. It includes unselfish giving and the support of others. While preparing my recommendations for merit marks and reviewing the past year, it was apparent that the Duluth Squadron knows what teamwork is all about.

Our members know what it takes to be team players. The Dockmaster Committee works hard all summer to maintain and clean the dock, for all members to use. The Calling Committee and Membership Involvement team are credited with good participation at events. From handing out safe boating packets to proctoring the Boating Course, our members make a difference in public service. Due to your continued efforts in cooperative charting and public relations, our squadron is a leader. When District 10 offered a membership referral program and encouraged us to recruit new members, you did. Educational courses for these new members were needed and you volunteered to teach. When USPS headquarters requested financial support for the building project, you contributed. And the list goes on!

This current year, we have had over one third of our active members involved by supporting the various programs and donating many hours of time. Each made significant contributions to several activities or committees. Our squadron's success belongs to this group of individuals.

If I could describe our squadron's leadership, it would include the terms diverse and unified. Our chairpersons and officers have various and differing personalities, backgrounds, and convictions. Our younger leaders are enthusiastic and hardworking. And our senior members (referring to many years of membership) provide valuable insight, expertise, and



experience. Each is an active and vital part of our squadron's leadership. Their differences are complementary and they act as a cohesive unit providing backup for one another. We are fortunate to have a squadron with such good working relationships and unity.

Adaptability to change is an important factor that allows some organizations to grow while others decline. As the world continues to change, it is important that our squadron continues to promote activities that keep pace with the changing times and membership needs. It is every

member's responsibility to look after the health and well being of this squadron.

Do we have programs that pique the interest of members, young and old, male and female? If we have been doing the same activities year in and year out, is it time to focus on some new ideas or projects to encourage enthusiasm and increase involvement? We need your ideas and suggestions to ensure continued effectiveness and growth. Please do some brainstorming and think big! Let's not be afraid to try something new or take some risks.

I am pleased to say that our events and meetings have been well attended. In particular, a couple of general meetings had outstanding attendance with 95-100 members present. The successful turnout can be attributed to a couple of factors and may include some minor changes made in dinner arrangements. Although I personally enjoyed these events, we realized the room was inadequate for the evening's attendance. We are continuing to look for ideas on locations and future programs. Please let us know if you have any suggestions.

One of the last events for the year is our annual Christmas party. It promises to be a festive and fun event. Chair Kim Strandlund started planning it with long distance telephone calls to her committee, while enjoying Florida's fall weather. Hope to see you there, so I can wish you a Merry Christmas in person.

Season's Greetings to you and your family,  
Cdr Mary Brisky

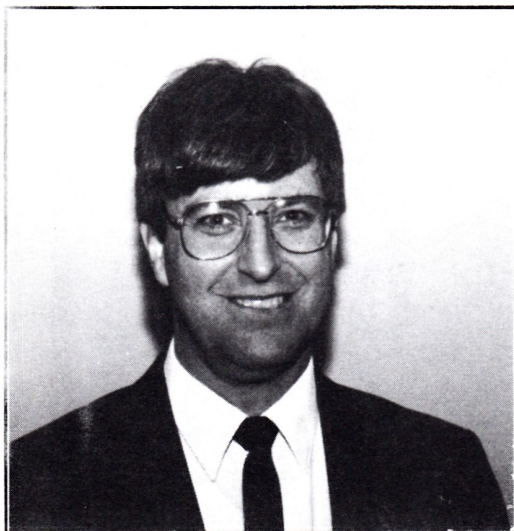


# Executive Officer's Report

A boating season has come to an end for most of us by now. Those of us who have an inboard(s) or an inboard/outboard(s), usually we have to be out of the water and fully winterized by Halloween. If you winterized your own boat, have you used the wire trick to fully drain the water out of the engine block(s)? If you didn't, you may still have time, if you hurry, to save your engine(s). With an outboard motor, you sure can extend your boating season without having to worry about your engine freezing up.

Hope everyone had a good boating season. I will be looking forward to seeing you in any one of the winter classes that are offered by your own squadron members. Some that will be starting soon, and I hope to see you at the General Meetings during the non-boating season.

With Christmas coming up soon, you may still be looking for a Christmas gift to give someone. I have a great idea to pass along to many of you. For my birthday a short time ago, my wife, Pam, gave me a book called "The Superior Way". It's a second edition about 'A Cruising Guide to Lake Superior' by Bonnie Dahl. This book was recommended by Jean Hecht. Since talking about the book with others, I have found out that there are others that also have the book and are quite happy with it. The first edition was out in 1983. The second edition, which I have, came out in June, 1992. The second edition includes: new marinas and anchorage's, how to equip your boat, approaching U.S. and Canadian



Customs, communicating, weather systems and broadcasts, and the latest navigational information, including Loran-C and the Global Positioning System (GPS).

The second edition is 33% larger than the first edition, so for those of you who have the first edition only, maybe it is time to move up to the second edition for the current updates.

So far, I have read the chapter on the Apostle Islands, Chapter 4. I read this first since I would like to cruise this area next year and would like to have some knowledge of the area and what to expect. From reading the chapter, there are many anchorages that protect you from the wind, from certain directions, and it also tells you where to go as the wind directions change. Chapter 4 also tells you about the history of the islands, explains about the different types of fishing nets used around the islands and what to watch for, to avoid getting caught up in them. Then it explains (with drawings) about the non-island marinas close to the islands, about each island alphabetically and shows the anchorage's and dock facilities and describes what to watch for (both under the water and weather wise).

New time you are in a bookstore, look at the book at least. I am still enjoying mine and have more to read. Isle Royale will be the next chapter of interest for me. Thanks, Pam, for the wonderful gift!

For an update on the Co-op Charting computer disc, I have turned them over to P/C Bob Byrne, Co-op Chairman, to set up the program and to get on line for reporting to National.

Lt/C Jay Halling P





# Administrative Officer's Report

I hope everyone had fun this fall boating with our extended season. I'm sure each of you have some great stories, and maybe some stories last years' winner of the CALABASH would think were really great.

I'm sitting here writing this article on the 9th of November thinking how unseasonable warm it is (the outside temperature is over 50 degrees). While driving up to Two Harbors today, I looked out over the lake and saw a boat out fishing. That doesn't happen very often in November. Everyone also remembers that November 10th storm, 19 years ago when the Edmund Fitzgerald went down.

The District 10 Fall conference took place over the weekend of October 21-23 in Wausau, Wisconsin. As this was my first district meeting, it was an eye opening experience meeting the District 10 officers and many other squadron people. I learned alot about Squadron protocol and some of the reasons behind District 10 operations. All the workshops I attended were helpful. Mary, Adrian and I did a little skit about membership and interviewing prospects. Our skit was about the right way to interview, and another squadron did the interview the wrong way. It was alot of fun, and everyone learned something. Thanks to Candy Hengel and



Steve Farrell who wrote the skits.

I received some very good comments from other squadrons, commenting on how well the Duluth Squadron is doing with membership retention and recruiting new members. Some the the members from the larger squadrons said they wanted to learn from us. We can all give ourselves a pat on the back for doing such a great job.

The interesting General meetings are one of the reasons we do so well. The great guest speakers and programs

keep people coming back. Another reason is the great job our membership committees are doing, thanks to Steve Farrell and Steve Johnson.

Everyone please congratulate our Squadron Educational Officer, Adrian Rick, for placing second place in the District 10 teaching aids contest.

Remember our Christmas party coming up December 10 at the Greysolon Plaza. Kim Strandland has been planning all the special happenings and surprises so keep that date open and hope to see you there.

Question!! What ever happened to "SPANKY"??

Lt/C Jerry Carlson AP



1901 MINNESOTA AVENUE  
Park Point, MN 55802  
727-7635

7am To 8pm 7 Days a Week  
"FRESH MEATS & DELICATESSEN "

LISCOMB  
HOOD



MASON CO.

INDEPENDENT INSURANCE AGENT  
212 Medical Arts Building  
(on Duluth's downtown skywalk)  
Duluth, MN 55802 218-722-7472  
UNITED STATES POWER SQUADRON  
Authorized Agent



# Education Officer's Report

Winter lay-up won't be so bad after all! At least, not if you're one of the people currently attending our winter '94-'95 classes. Twenty-six squadron members are learning (or reviewing) Piloting. Twelve students are taking the popular Engine Maintenance class. If you couldn't take advantage of the classes started, it's not too late to take the elective course on Weather. Weather will begin December thirteenth and will meet at the Herbert Service Center of Minnesota Power. Late winter we will offer both Advanced Piloting and Cruise Planning. Kick off boating season '95 with completion of these for a lot of fun and, of course, safety.

The next Public Boating Course begins January third. Tell a fellow boater and make plans to show up

yourself! We always need help teaching marlinspike, answering student questions and correcting homework. Contact Jim Naslund if you're able to help out.

National has just made it easier for us to conduct examinations. Now all Full Certificate Holders (those that have taken all the classes offered) can now help conduct exams, not just the S.E.O. or class chairs.

This year we won second place in the teaching aid competition at the Fall District Conference with our entry for Piloting. Our goal for next year's conference is to have an entry for every class category. Any ideas? Contact Kathy Rick and watch for upcoming "teaching aid parties".

Lt/C Adrian Rick, AP

---

## Education - Supplemental Programs

AMATEUR RADIO  
INTRO. TO ASTRONOMY  
INTRO. TO SAILING  
PREDICTED LOG CONTEST  
OCEANOGRAPHY  
ELEMENTS OF BOAT DESIGN  
CALCULATORS FOR NAV.  
ELECTRONIC NAVIGATION

COMPASS ADJUSTING  
SKIPPER SAVER  
PREP FOR C. G. LICENSE  
BOAT INSURANCE  
HAND TOOLS  
PRINCIPLES OF WATER SKIING  
SIGHT REDUCTION METHODS  
MARLINSPIKE

.....

### CALCULATORS FOR NAVIGATION

A guide to the use of "pocket" calculators for the tedious computations relating to navigation from coastal piloting to celestial navigation.

.....

INTERESTED IN THE ABOVE SELF-STUDY COURSES? MOST COST LESS THAN \$10.00 PER BOOK AND CAN BE EASILY ORDERED FOR YOU! FOR MORE INFORMATION ON AVAILABLE BOOKS, CONTACT SUPPLEMENTAL COURSE CHAIRMAN LT. ROBERT P. FISHER (715) 375-3819 or SQUADRON EDUCATION OFFICER LT/C ADRIAN RICK @ 624-3772.



**MARINE  
GENERAL  
SPORTS**

*Marine General*

**218-724-8704**  
**1501 London Road Duluth, MN 55812**

**Drinking and Boating  
can bring a whole new  
meaning to getting  
SMASHED!**



Nationally  
Registered  
Paramedics  
provide Advanced Life Support.  
Emergency and Non-Emergency  
transportation...anywhere—  
anytime.

**722-0807**



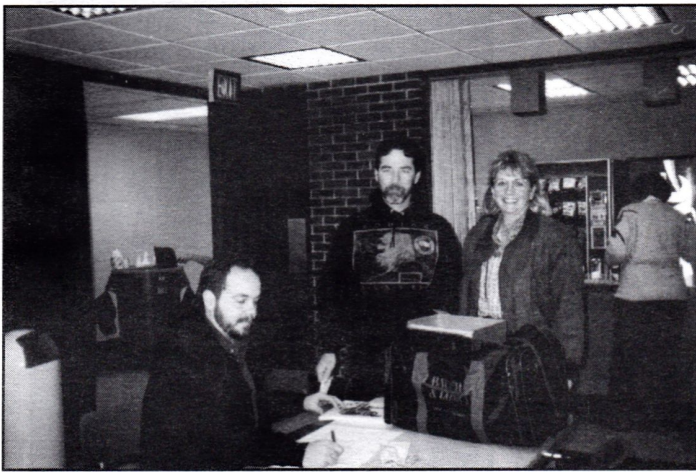
**TWIN PORTS  
CONVALESCENT**

Safe, reliable wheelchair  
transportation for medical  
appointments or social  
visits.

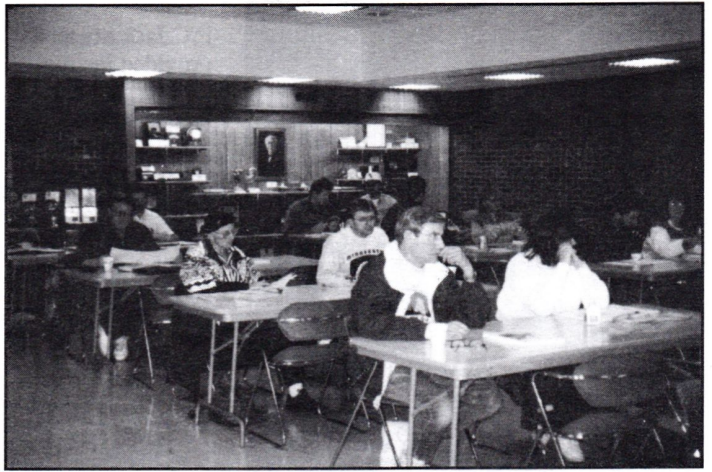
**727-3036**

211 East Second Street • Duluth, Minnesota

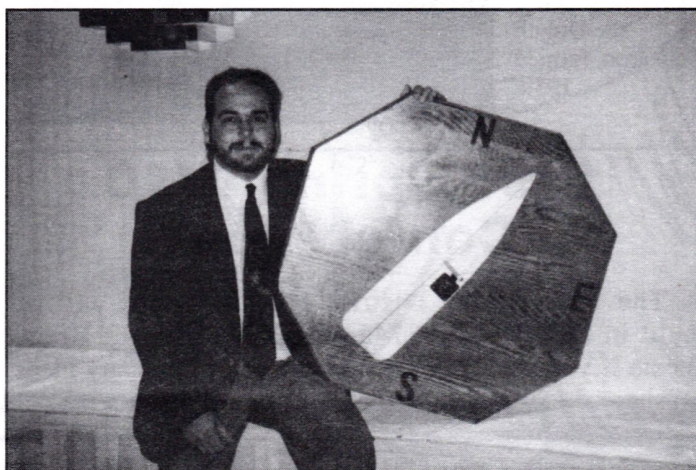




Adrian Rick helps register some of the 26 students enrolled in the current Piloting Course.

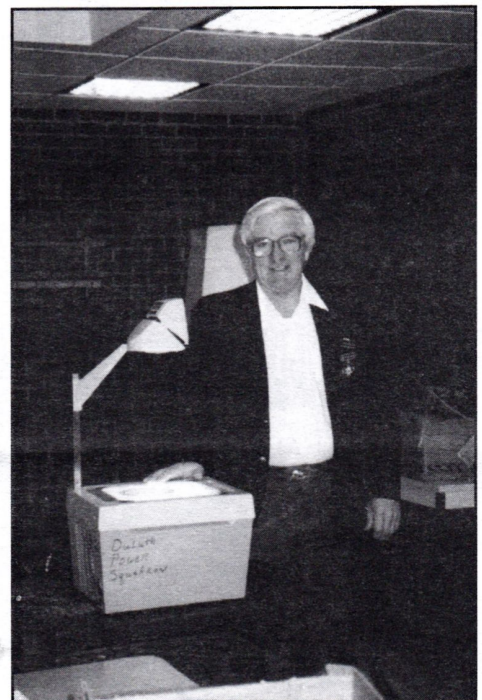


Fall Piloting Class.



Education Officer Adrian Rick displays the teaching aid he developed and presented at the D/10 Fall Conference in Wausau. He won 2nd place and a \$30.00 check was presented to our squadron.

An instructor for the Piloting Course, P/C Bob Byrne presented a brief introduction to Cooperative Charting to the class.

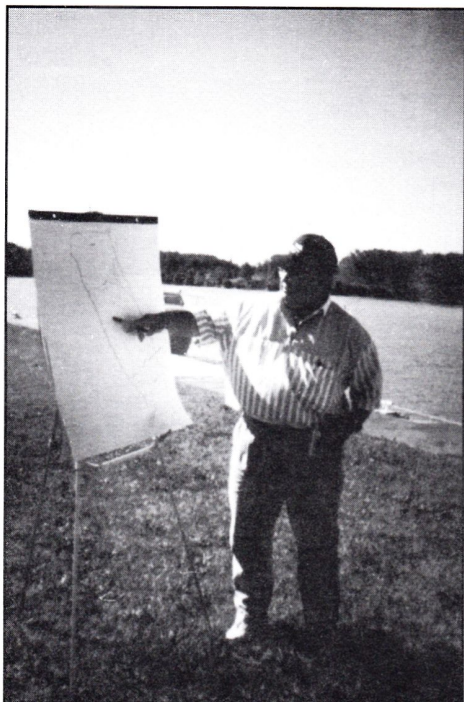


Larry Laplante demonstrates the cleat hitch to other class members.



P/C Bob Byrne and Piloting students prepare for marlin-spike practice.

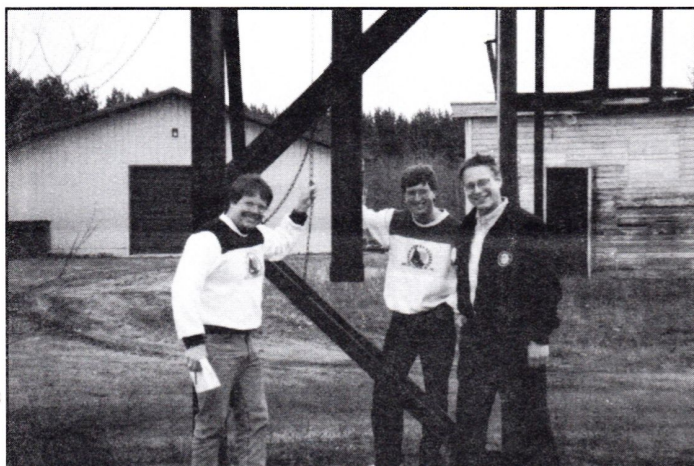




P/C Jack Soetebier provided instruction on sailboat racing for the Commander's Cruise. Here he points out the course for the Spirit of the Lake Regatta held the same day.



P/C Bill George and his wife, Millie, were in attendance at the October General Meeting. Bill is a charter member of the Duluth Squadron, formed 1939.



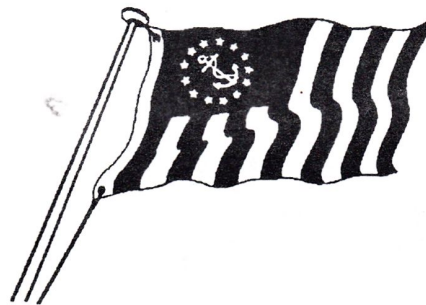
A hunting we will go! Delegates to the D/10 Conference in Wausau, WI (Jerry Carlson, Jay Halling and Greg Brisky) located and documented goegetic markers during the ride home.



These Ship's Store helpers are excited about our new Duluth Squadron polo shirts and sweatshirts. They would make a great Christmas gift to someone on your list. Contact Charlie Rouse at 727-2073 for details.

## 1996 Spring D/10 Conference

The 1996 Spring District 10 Conference will be held in DULUTH on March 22-24. Contact Bruce Beste if you would like to volunteer or have any ideas to share.



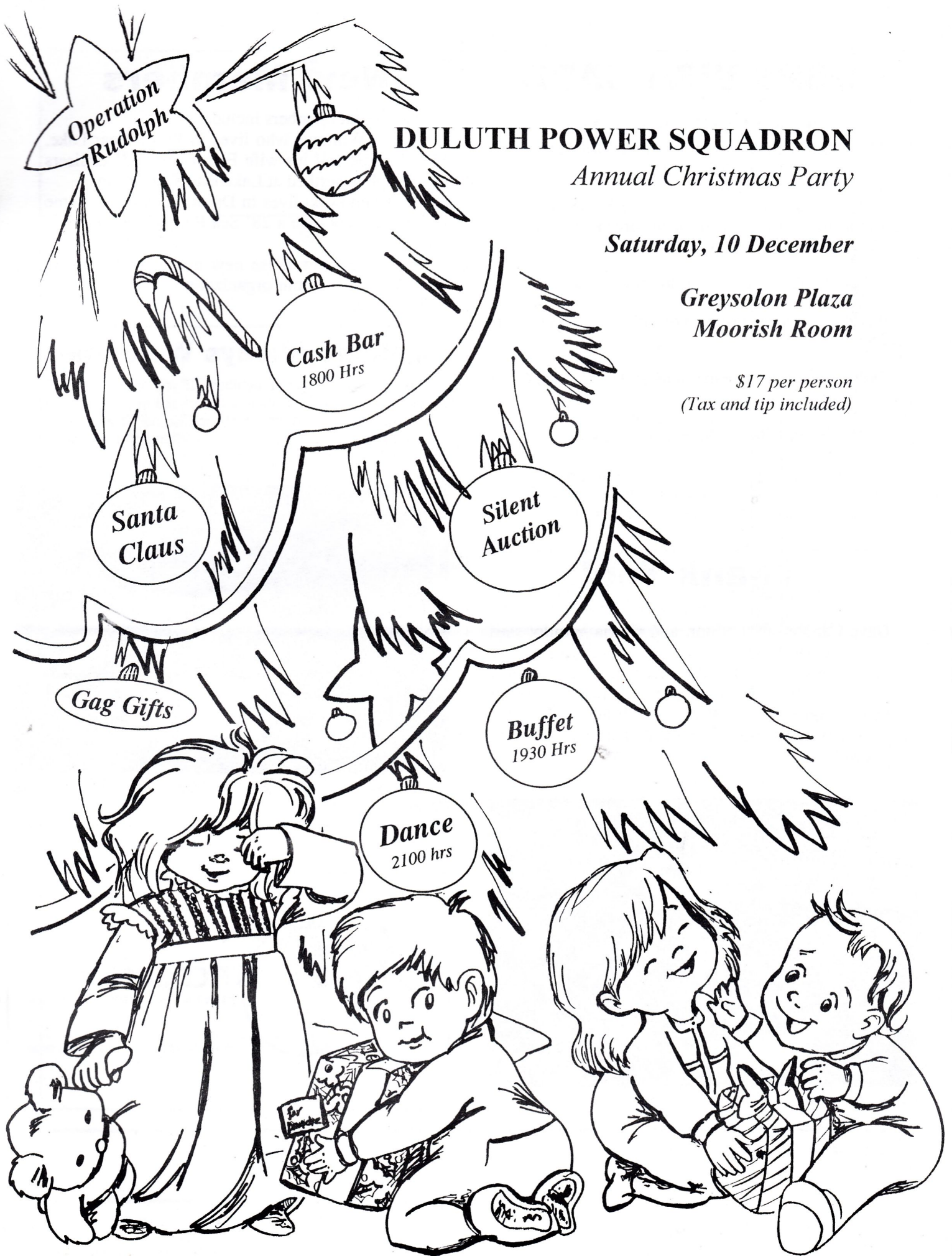
**IN MEMORY OF**

**Stanley Sivertson, AP**

**1913 - 1994**

**Stan was a 25 year member  
with the Duluth Power  
Squadron.**





# DULUTH POWER SQUADRON

*Annual Christmas Party*

*Saturday, 10 December*

*Greysolon Plaza  
Moorish Room*

*\$17 per person  
(Tax and tip included)*



# USPS VISA CARD

## Great Card • Great Deal

United States Power Squadron Visa Card

6.9% APR\*

No Annual Fee

Each time you use your card, First USA Bank will make a donation to help support the important activities sponsored by the USPS and your local squadron.

24-hour Cardmember service 365 days a year.

Worldwide acceptance at more than 10 million locations.

Cash advances 24 hrs a day at more than 101,000 Cirrus ATMs.

For an application,  
contact Greg or Mary Brisky, 724-4916

\*The annual percentage rate will be fixed at 6.9% for the first six billing cycles following the opening of your account, and will vary monthly thereafter (14.65% as of 9/20/94).

## Thank You!

The Duluth Power Squadron would like to thank Dave Carlson, past editor, and Gloria Vitullo, staff assistant, for the many hours they contributed to the Squadron's newsletter, the *Channel Chatter*. Over the years, the time they put into the newsletter helped communicate to the squadron members the latest news of the USPS at local, district and national levels.



Dave Carlson, past editor, *Channel Chatter*.

# New Members

Our newest members include:

Charlie Williams who lives in White Bear Lake, MN. Charlie and his wife Fran own a 33' Cruisers Inc. which is berthed at Lakehead Boat Basin.

Jon Kalenowski lives in Duluth. His wife's name is Muffy. They own a 28' Sea Ray named "Frankie Marie".

Please welcome these new members and make them feel a part of our organization.

Steve Farrell

## Articles Always Welcome

Duluth Power Squadron members! If you're tired of reading articles from the same members over and over, please feel free to contribute articles/photos to the *Channel Chatter* whenever you can. The articles can be on anything related to boating including sharing your boating experiences.



David F. Poulin, was awarded his 25 Year Membership at the October General Meeting.



**Northwest**  
**OFFICE SUPPLY**  
202 EAST SUPERIOR ST. DULUTH, MINN. 55802  
727-7295  
1201 CLOQUET AVE., CLOQUET, MINN. 55720  
879-8648



# DECEMBER 1994

November 1994						
S	M	T	W	T	F	S
		1	2	3	4	5
6	7	8	9	10	11	12
13	14	15	16	17	18	19
20	21	22	23	24	25	26
27	28	29	30			

December 1994						
S	M	T	W	T	F	S
				1	2	3
4	5	6	7	8	9	10
11	12	13	14	15	16	17
18	19	20	21	22	23	24
25	26	27	28	29	30	31

January 1995						
S	M	T	W	T	F	S
1	2	3	4	5	6	7
8	9	10	11	12	13	14
15	16	17	18	19	20	21
22	23	24	25	26	27	28
29	30	31				

Sunday	Monday	Tuesday	Wednesday	Thursday	Friday	Saturday
				1 Watch for WEATHER CLASSES 7:00p Executive Board (Incline Station)	2	3
4	5	6 Engine Maintenance	7 Piloting	8	9	10 6:30p Christmas Party (Greysolon Plaza)
11	12	13 Engine Maintenance	14 Piloting	15	16	17
18	19	20 Engine Maintenance	21 Piloting	22	23	24
25	26	27 Engine Maintenance	28 Piloting	29	30	31



# JANUARY 1995

Sunday	Monday	Tuesday	Wednesday	Thursday	Friday	Saturday																																																																																																																													
1	2	3 Engine Maintenance Public Boating	4 Piloting	5 7:00p Executive Board (Incline Station)	6	7																																																																																																																													
8	9	10 Engine Maintenance Public Boating	11 Piloting	12	13	14																																																																																																																													
15	16	17 Engine Maintenance Public Boating	18 Piloting	19 6:30p General Meeting	20	21																																																																																																																													
22	23	24 Engine Maintenance Public Boating	25 Piloting	26	27 8:00a D-10 Winter Council (Stevens Point, WI)	28 8:00a D-10 Winter Council (Stevens Point, WI)																																																																																																																													
29	30	31 Engine Maintenance Public Boating		<div>December 1994</div> <table><tr><td>S</td><td>M</td><td>T</td><td>W</td><td>T</td><td>F</td><td>S</td></tr><tr><td></td><td></td><td></td><td></td><td>1</td><td>2</td><td>3</td></tr><tr><td>4</td><td>5</td><td>6</td><td>7</td><td>8</td><td>9</td><td>10</td></tr><tr><td>11</td><td>12</td><td>13</td><td>14</td><td>15</td><td>16</td><td>17</td></tr><tr><td>18</td><td>19</td><td>20</td><td>21</td><td>22</td><td>23</td><td>24</td></tr><tr><td>25</td><td>26</td><td>27</td><td>28</td><td>29</td><td>30</td><td>31</td></tr></table>	S	M	T	W	T	F	S					1	2	3	4	5	6	7	8	9	10	11	12	13	14	15	16	17	18	19	20	21	22	23	24	25	26	27	28	29	30	31	<div>January 1995</div> <table><tr><td>S</td><td>M</td><td>T</td><td>W</td><td>T</td><td>F</td><td>S</td></tr><tr><td>1</td><td>2</td><td>3</td><td>4</td><td>5</td><td>6</td><td>7</td></tr><tr><td>8</td><td>9</td><td>10</td><td>11</td><td>12</td><td>13</td><td>14</td></tr><tr><td>15</td><td>16</td><td>17</td><td>18</td><td>19</td><td>20</td><td>21</td></tr><tr><td>22</td><td>23</td><td>24</td><td>25</td><td>26</td><td>27</td><td>28</td></tr><tr><td>29</td><td>30</td><td>31</td><td></td><td></td><td></td><td></td></tr></table> <div>February 1995</div> <table><tr><td>S</td><td>M</td><td>T</td><td>W</td><td>T</td><td>F</td><td>S</td></tr><tr><td></td><td></td><td></td><td></td><td>1</td><td>2</td><td>3</td></tr><tr><td>4</td><td>5</td><td>6</td><td>7</td><td>8</td><td>9</td><td>10</td></tr><tr><td>11</td><td>12</td><td>13</td><td>14</td><td>15</td><td>16</td><td>17</td></tr><tr><td>18</td><td>19</td><td>20</td><td>21</td><td>22</td><td>23</td><td>24</td></tr><tr><td>25</td><td>26</td><td>27</td><td>28</td><td></td><td></td><td></td></tr></table>	S	M	T	W	T	F	S	1	2	3	4	5	6	7	8	9	10	11	12	13	14	15	16	17	18	19	20	21	22	23	24	25	26	27	28	29	30	31					S	M	T	W	T	F	S					1	2	3	4	5	6	7	8	9	10	11	12	13	14	15	16	17	18	19	20	21	22	23	24	25	26	27	28			
S	M	T	W	T	F	S																																																																																																																													
				1	2	3																																																																																																																													
4	5	6	7	8	9	10																																																																																																																													
11	12	13	14	15	16	17																																																																																																																													
18	19	20	21	22	23	24																																																																																																																													
25	26	27	28	29	30	31																																																																																																																													
S	M	T	W	T	F	S																																																																																																																													
1	2	3	4	5	6	7																																																																																																																													
8	9	10	11	12	13	14																																																																																																																													
15	16	17	18	19	20	21																																																																																																																													
22	23	24	25	26	27	28																																																																																																																													
29	30	31																																																																																																																																	
S	M	T	W	T	F	S																																																																																																																													
				1	2	3																																																																																																																													
4	5	6	7	8	9	10																																																																																																																													
11	12	13	14	15	16	17																																																																																																																													
18	19	20	21	22	23	24																																																																																																																													
25	26	27	28																																																																																																																																



# Winterizing

In preparing your boat for winter, here are some things to keep in mind:

If you use a winter cover, be sure the radar antenna is protected from the weight of snow on the cover. I have seen several antennas that were crushed because of this.

It is best to remove those electronics that are easily unplugged. They will fare better in your closet. LCD type screens can go bad from extreme cold.

Disconnect your ships batteries. Some electronics draw a little bit of current even when turned off and can flatten a battery over the winter.

If you fold your antennas down for the winter be sure that water can't get in the bottom. Water inside an antenna or loran coupler will ruin it.

Check the expiration date on your FCC ships station license. Also, if you have a radar be sure that radar frequencys are listed on your license. Winter is a good time to deal with the paperwork.

John Harrison, AP  
Radio Technical Officer



Commander Mary Brisky presented Jack Soetebier with a Certificate of Appreciation for his instruction on sailboat racing this summer for the Spirit of the Lake Regatta.



Member Bob Fisher was presented with his JN Certificate at the October General Meeting. With him is his wife, Kathleen.

## LOOKING FOR CHRISTMAS GIFT IDEAS?

### CHECK OUT YOUR OWN DULUTH POWER SQUADRON "SHIP'S STORE".

Buy your Captain or 1st Mate a  
Duluth Power Squadron  
sweatshirt, polo shirt,  
navigational tools, jewelry,  
USPS flags, DPS burgee,  
and much more!

Call Charlie Rouse @ 727-2073



Over 20 Years Experience



BILL WILLIAMS  
Bus. Phone 392-8263

1918 Iowa Ave.  
Superior, WI 54880

Fast, Quality Service

## Specialty Welding PROP SHOP



SKEG REPAIR

BOAT PROPELLER REPAIR & SALES  
ALUMINUM, BRASS, STAINLESS

ERIC (RICK) HOGLUND  
(218) 729-8304

3833 MILLER TRUNK HWY.  
DULUTH, MINNESOTA 55811

(218) 727-0101 BUS.  
(218) 727-2074 HOME



## FIRE & INDUSTRIAL SALES F & I SALES, INC.

HOWARD L. BOYNTON

P.O. BOX 16712  
1902 W. 1ST STREET  
DULUTH, MINNESOTA 55806



NOBODY FITS  
YOUR BUDGET  
FOR TIRES OR  
SERVICE LIKE  
GOODYEAR

ARROWHEAD EQUIPMENT  
3112 TRUCK CENTER DR.  
DULUTH, MN  
628-2345

# Meehan's



## AUTO PARTS

2117 WEST SUPERIOR ST. • DULUTH, MINNESOTA 55806

JAMES (SMILEY) MEEHAN  
PRESIDENT

PHONE: 727-8401

DON HANSEN

STEVE HANSEN

## ERLING HANSEN GENERAL CONTRACTOR, INC

Phone (218) 722-0589

2222 West 2nd Street  
Box 16224  
Duluth, MN 55806

Fax (218) 722-9836  
Mobile Phone 343-0208



Duluth Tire & Oil Inc.  
DAN BLOOM

SERVING HARBOR COVE & SPIRIT LAKE

JOBBER  
SPUR GAS & FUEL OIL

2802 West Superior Street  
Duluth, Minnesota 55806  
(218) 722-5886

# First Mate's Locker

Come see our selection  
of boating Christmas  
cards & other gift ideas

## Featuring Nautical Gifts

Located at Lake Breeze Motel Resort  
Scenic North Shore Drive  
9000 Congdon Blvd., Duluth, MN 55804 • 525-6808



## Featured Contributor

Fire & Industrial Sales Co. is happy to be the featured advertiser for this edition of Channel Chatter. We have been located in the "Friendly West End" since 1978, and we offer over fifty years of fire safety experience.

Although we service all phases of industry such as schools, universities, grain elevators, railroads, etc., I wish to discuss the maritime field in this article. Each January our company performs an annual fit-out inspection and service of many commercial vessels that winter in the Duluth-Superior Harbor. After ice out in March and April, we inspect tugs, service vessels and commercial fishing vessels. Through may and June we are busy with many of the pleasure vessels before they are launched.

For a number of years we have performed a free annual inspection of fire extinguishers during Safety weekend at Cowan Cove. Come on down for some informative demonstrations by

our company, the U.S. Coast Guard and the auxiliary.

I am a past commander and life member of the Duluth Power Squadron and have belonged since 1958. My boating experience has been primarily on the Great Lakes, but have managed to sail both the Atlantic and Pacific courtesy of Uncle Sam.

Next Spring, complete your vessel fit-out with a visit to our shop, or come on down to the Duluth Power Squadron Dock in Allouez Bay. It was named Cowan Cove after Larry Cowan, past commander of the Duluth Power Squadron and past commander of USPS 10th District. Larry was the prime motivator in our obtaining the long lease from the owners of the dock property.

Safe Boating.

Howard Boynton

---

### FIRE & INDUSTRIAL SALES (F & I Sales, Inc.)

1902 W. 1st Street - P.O. Box 6712 - Duluth, Minnesota 55806 - (218) 727-0101





CHANNEL CHATTER  
DULUTH POWER SQUADRON  
323 N. 61ST AVE. W.  
DULUTH MN 55807

*Thank you to our  
contributors  
for helping us promote  
Safe Boating!*



NON-PROFIT  
ORGANIZATION  
U.S. POSTAGE  
**PAID**  
DULUTH, MN  
PERMIT NO. 771

#### DEADLINE NOTICE

for the next issue  
of the Channel Chatter, Feb-March 1995 is

**Thursday, January 5, 1995.**

The Channel Chatter is published six times annually. All members are welcome to contribute articles and photos. Please send them to the attention of:

Peggy Berg, Editor  
Channel Chatter  
323 N. 61st Ave. W.  
Duluth, MN 55807  
624-1478 (evenings), 723-9496 (daytime)  
723-9122 (fax)

If you are submitting a photo, please also include the negative. All materials will be returned after publication.

## Patty Cake Shop

Captain Jack Soetebier invites you to stop in and try some of his world famous Goodies, Pasties, Cakes, Doughnuts, Breads and many more delicious items.

***All baked by Duluth's  
Master Baker***

1434 East Superior St. - Duluth

728-4219

**TODD  
SIGNS**  
DESIGNERS CREATORS

324 Miller Trunk Hwy. Duluth, MN 55811

**729-6800**

*Buy from whom the architects consult... We are the area's most experienced signage experts with the zenith of quality by which others are judged.*

INTERIOR-EXTERIOR SIGN SYSTEMS / LETTERS  
ELECTRICAL / NEON / DISPLAYS / SCREEN PRINTING  
LETTERING BY COMPUTER & BY HAND / FLAG POLES

**SALES - INSTALLATION - MAINTENANCE**



Established 1889

**DWIGHT SWANSTROM COMPANY**

31 N. 21st Ave. W., Duluth, MN 55806

**GREG BRISKY**

**AGENT FOR USPS INSURANCE**

Home 218-724-4916

Office 218-727-8324

**Leadership**  
**in environmental stewardship:**  
**not just an idea...it's our responsibility.**

