

Major Sponsors



Other Sponsors:

The Prop Shop

Lakeshore Ice

Nathan Radoush Consulting

Barker's Island Marina

Z.R. Landscaping

Duke Boys Towing

Alta Land Survey

Saratoga Liquor

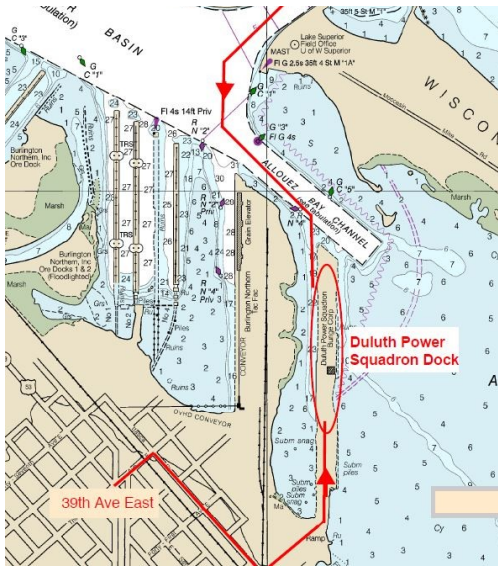
Custom Archery and Outdoors

Focal Point Flooring

JAMAR

East End Auto

Interstate Batteries



The Duluth Power Squadron dock is located just inside the Superior Entry in Allouez Bay. The Duluth-Superior Harbor chart shows it.

To get to the Duluth Power Squadron dock by car, go east out of Superior on Highway 2 & 53. On 39th Avenue East, turn left at the stoplights. Go 2 blocks. Turn right on Itasca Street. Go 5 blocks. Turn left on 44th Avenue East. This road will end at the Power Squadron dock.

A note from the tournament directors:

Please be aware that as good sportsman's, we all want to preserve the fishing on Lake Superior. Harvesting unnecessary fish is discouraged. The releasing of fish that would not make the leader board or are typical of being released based on size/weight/species is encouraged. We all have to do our part to help maintain our incredible fishery. This is **NOT** a contest for who can fill the cooler but it is designed to be a big fish, 5 species contest which follows within the guidelines of the Department of Natural Resources. Please do your part to help preserve our resource.



Duluth Sail & Power Squadron

Questions On Fishing Contest? Please call:
Todd Carlson (218) 348-4733
www.duluthsailandpowersquadron.com

Captain's Platter Fishing Contest



CAPTAIN'S PLATTER FISHING CONTEST
Est. 2004

**Saturday
June 11, 2022**

6:00 am - 4:00 pm

Open to the Public!



Sponsored by
Duluth Sail & Power Squadron

Safe Boating Through Education
www.duluthsailandpowersquadron.com

Captain's Platter Fishing Contest



This contest is sponsored by the Duluth Sail and Power Squadron.

Where: Lake Superior and St. Louis River Basin

When: Saturday, June 11, 2022 ~ 6 a.m. to 4 p.m.

Cost: \$40 per person

NEW 2021: Anglers 15 and under are free and will need to pick up a ticket at the ticket outlets.

NEW 2021: The 8 pound fish category will be replaced with a big fish weight prize. Fish must be one of the fish divisions.

Tournament Headquarters: Power Squadron Dock in Allouez Bay

Prizes:

1st place- \$400

2nd place- \$300

3rd place- \$200

in each of the following five categories:

Walleye Coho Salmon
King Salmon Brown Trout Lake Trout

Captain's Platter

The Captain's Platter award goes to the boat captain with the greatest weight for each of the five categories. Only one fish from each category can qualify for this award. You do not need to catch one of each category to qualify for this award. It is possible to win the Captain's Platter with only one fish.

We will be drawing for door prizes on Saturday at 5:00 pm after awards.

Rules:

PARTICIPANTS AND ELIGIBILITY

- Registration requires purchase of a ticket. You may purchase tickets at select merchants or in person by coming to the Duluth Sail & Power Squadron dock on the Friday before the event from 6:00 pm to 9:00 pm.
- Each Angler must comply with all State, Local, and Federal fishing and boating regulations for the St. Louis River and Lake Superior.

SAFETY AND SPORTSMANSHIP

- Entrants must conduct themselves in a true sportsmanlike manner. Courtesy, safety and ethics of the best behavior are the norm and not the exception. Remember that you represent not only yourselves but all tournament anglers and the sport of fishing. Rude or insulting behavior will not be tolerated and may be cause for disqualification.

FISH AND FISHING

- You must start and end your fishing day on the St. Louis River or river basin. You may fish anywhere on Lake Superior, the St. Louis River, and it's estuaries or the Nemadji River.
- Fish identification determinations are based upon the DNR Fishing Regulations. Disputed fish may be stored in a cooler at the weigh-in. Places are determined by fish weight and time entered. In case of a tie, the weigh in time will determine the winner.
- This is a fishing tournament. Only those walleyes, trout, or salmon caught on hook and line in a conventional sporting manner will be accepted for weigh-in. Weigh only one fish per species for each entrant.
- Weigh-in of all fish will take place at the Power Squadron Dock at Allouez Bay. **The Weigh-in station will open from 2 pm to 4 pm.** All contestants must be inside the Squadron Harbor 10 minutes prior to the end of weigh-in time to be considered "in line for fish registration." Please remind others that the Squadron Harbor is NO WAKE! No culling or live-well sorting is allowed. Any fish you take into possession, which you do not release immediately, is part of your daily bag limit even if it is released later. (This is the law.)

CONTEST FORMAT

- This is an open format. You can start fishing at any time after 6 a.m. on the day of the contest. Please note that you will not be able to register for participation in the tournament after 8 a.m. Saturday. All people in the boat/charter must have a valid ticket in possession for the contest. Prizes for fish will be given out only for fish that are weighed.
- The Captain's Platter award goes to the boat captain with the greatest weight for each of the five categories. Only one fish from each category can qualify for the award. You do not need to catch one of each category to qualify for this award. It is possible to win the Captain's Platter with only one fish.

All rules have "loopholes". It is the intention of the Duluth Sail and Power Squadron to provide an honest sportsmanlike tournament. In the interest of good sportsmanship, contestants are reminded that the "Spirit of the Rule" will prevail. All questions, judgments, or problems during the tournament will be referred to the Tournament Directors. Tournament Directors will have sole authority and jurisdiction in determining the application of the Tournament Rules and Regulations.

Liability Release: By purchasing a ticket for this event, I acknowledge I am voluntarily participating in the Captain's Platter Fishing Contest. I am aware that my participation may involve risk of serious personal injury or death. By participation, I realize I may suffer loss or damage to persons and/or property. I assume all risk of injury, death, or loss to personal property, which may result from my participation in the fishing tournament. I hear by release and forever discharge the Duluth Sail and Power Squadron, tournament officials, sponsors, City of Superior or hosts, or events associated to this event, respective agents, employees, volunteers and guests from all claims, liabilities, damages or loss of any kind resulting from or caused by the negligence, strict liability or other fault, actions, inactions or conduct of the released parties. I further agree to abide by the tournament rules, and to accept as final and binding all decisions of the tournament judges. I HAVE READ THIS RELEASE OF LIABILITY AND TOURNAMENT RULES AND CLEARLY UNDERSTAND ALL OF ITS TERMS AND CONDITIONS. I AM PARTICIPATING VOLUNTARILY AND WITHOUT ANY RESERVATIONS. THIS WAIVER REPLACES ANY PREVIOUS RELEASES.

Tickets Available at



The Bait Box
3729 E. 2nd Street
Superior WI 54880



Free Vessel Safety Checks will be available on Friday from 6 pm - 9 pm, Saturday from 4 pm - 6 pm.